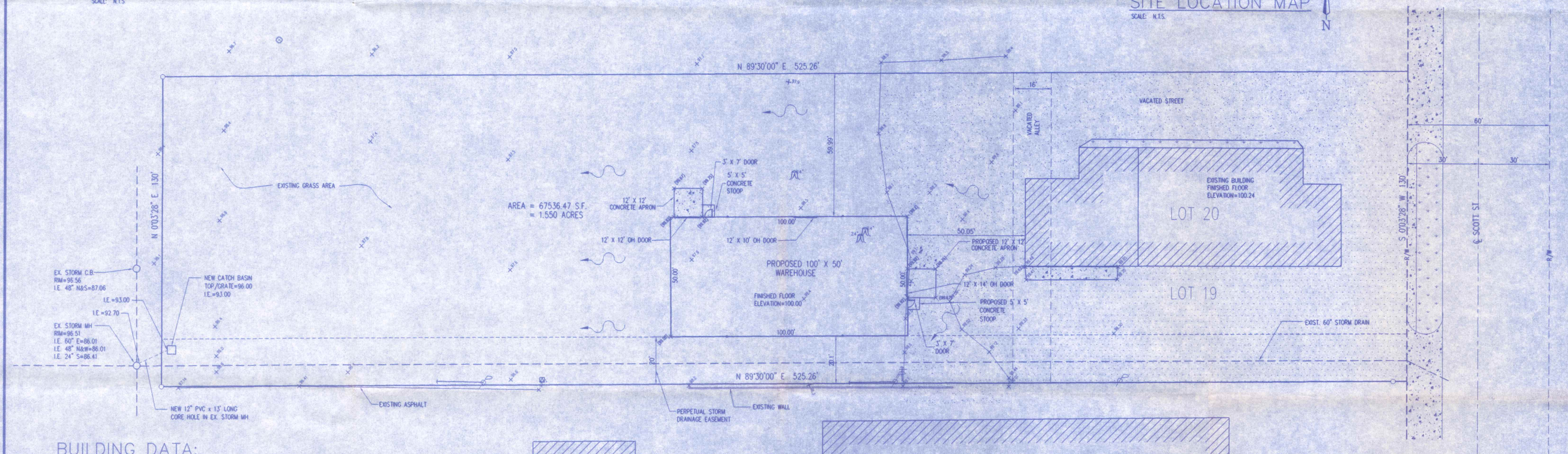
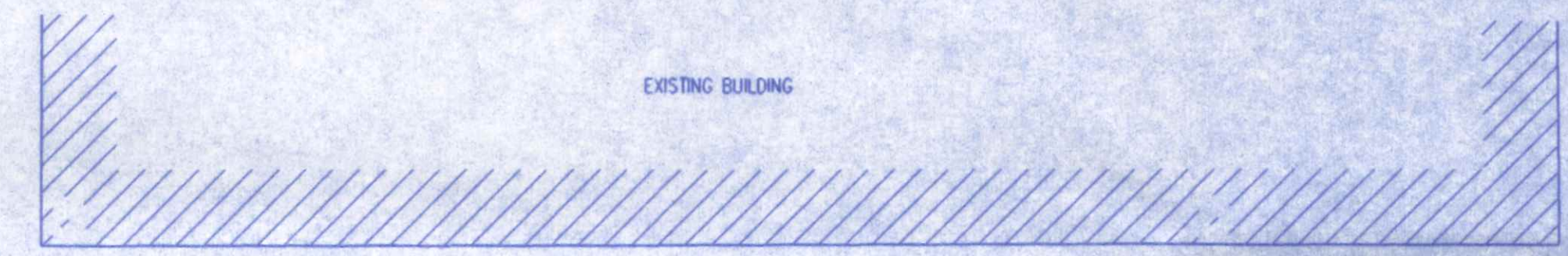
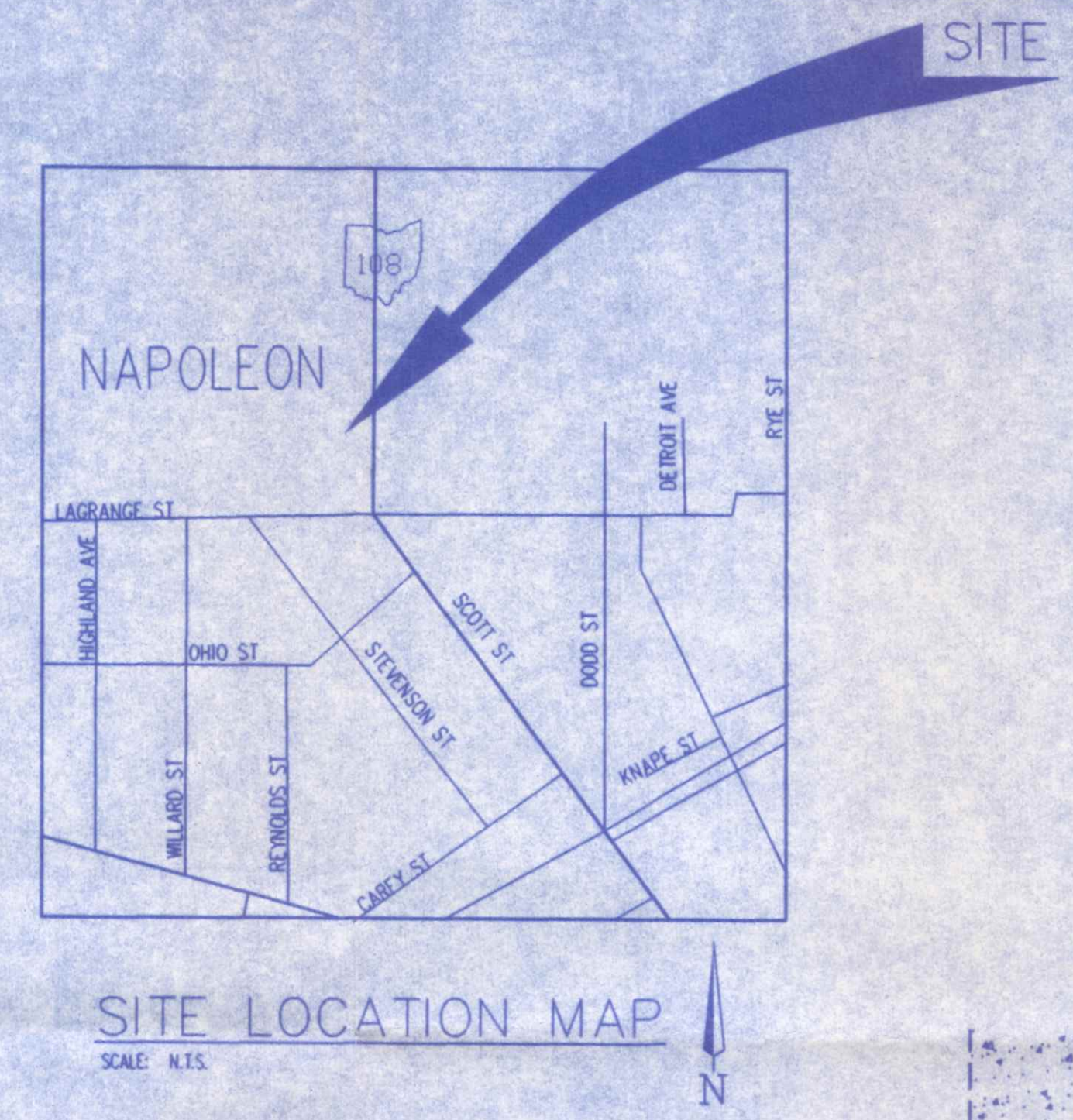


ODOT 2-2B CATCH BASIN

SCALE: N.T.S.

A Site Plan for George's Furniture being Lots No. 19 & 20 in J.A. Mehring's first addition to the City of Napoleon and also part of a vacated street & alley in said addition and also being part of The NE1/4, NE1/4 of Section 14, Town 5 North, Range 6 East, Napoleon Township, Henry County, Ohio.



**BUILDING DATA:**

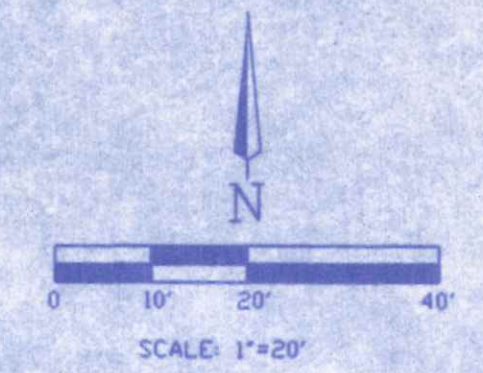
WAREHOUSE BUILDING  
 USE GROUP: S-1 MODERATE HAZARD STORAGE  
 CONSTRUCTION TYPE: 2C UNPROTECTED  
 AREA LIMITATION: 8,400 SQ. FT.  
 PROPOSED: 5,000 SQ. FT.  
 OCCUPANCY LOAD: 0 PERSONS

DESIGN LOADS  
 ROOF DEAD LOAD = 10PSF  
 ROOF LIVE LOAD = 20 PSF  
 GROUND SNOW LOAD = 25 PSF  
 FLAT ROOF SNOW LOAD = 17.5 PSF, Ce = 0.7, I = 1.0

WIND: 80 MPH, EXPOSURE C, I = 1.0, P = 15.4 PSF  
 NET UPLIFT ON ROOF = 5.4 PSF

SEISMIC: PEAK RELATED VELOCITY ACCELERATION, Av = 0.077  
 PEAK ACCELERATION, Aa = 0.10  
 SEISMIC HAZARD EXPOSURE GROUP = 1  
 SEISMIC PERFORMANCE CATEGORY = B  
 SOIL-PROFILE TYPE = S4  
 BASIC STRUCTURAL SYSTEM = RIGID & BRACED STEEL FRAMES  
 SEISMIC RESISTING SYSTEM = BRACED STEEL FRAMES  
 RESPONSE MODIFICATION FACTOR, R = 3 1/2  
 DEFLECTION AMPLIFICATION FACTOR, Cd = 3  
 ANALYSIS PROCEDURE USED = EQUIVALENT LATERAL FORCE PROCEDURE

LEGEND	
	Iron Pin Found
	Fire Hydrant
	Telephone Pedestal
	Power Pole
	Telephone/Power Pole
	Guy Wire
	Down Spout
	Existing Stone
	Existing Asphalt
	Existing Concrete
	Existing Grass



PERMITS	8-27-01	NO.	BY	DATE	
ISSUED FOR	DATE	REVISION	NO.	BY	DATE
CHECKED BY:	DATE				
 <b>T. R. Worline &amp; Associates, Inc.</b> Engineers • Surveyors • Designers • Planners 210 S. Main Street Swanton, Ohio 43558-1347 Phone: 419-825-1103 Fax: 419-825-3800 http://www.worline.com Email: trworline@worline.com					
SCALE: 1" = 20'	DRAWN BY: E.E.W.	DATE: 6-28-01	SHEET NO. 1 of 3		
NEW WAREHOUSE FOR GEORGE'S FURNITURE 1405 N SCOTT STREET NAPOLEON, OH 43545			PROJECT NO. 1517-0001		